

UCEM

BUILT FOR LIFE

Postgraduate MSc

Building Surveying





Contents

> Help shape the future	04
> Welcome	06
> 5 reasons to choose UCEM	07
> Your new community	08
> Programme outline	10
> Meet your programme leader	12
> Graduate Celebration Week	14



>	Study online	16
>	Support	17
>	Programme information	18
>	Fees and Funding	19
>	Global Community	20
>	Sustainability	22
>	Equality, Diversity and Inclusion	24

Help shape the future of the built environment

Building surveying is a growing, international, professional disciplines dealing with the inspection, maintenance, and refurbishment of existing buildings.

With an industry recognised UCEM building surveying postgraduate degree, you will be well prepared for a successful and exciting career as a chartered surveyor.

UCEM's accredited postgraduate programmes are designed for those who have expertise in property or construction and are looking to reach the next level of their career, as well as those entering the built environment.



A photograph of two young men in graduation caps and gowns, smiling. The man on the right is in the foreground, wearing a blue gown with a red stole. The man on the left is partially visible, wearing a dark gown with a red stole. The background is blurred, showing other graduates and a building.

BUILT FOR LIFE

Flexible and accessible learning that fits your life and career goals at every stage, creating a better built environment that is shaped with people in mind. We champion the role of the built environment as the setting in which life and lives take place, today and for generations to come.

APPLY NOW >

Welcome

UCEM is the leading provider of supported online learning for the built environment

Thank you for considering studying with UCEM. We are dedicated to ensuring your success and providing the best possible learning experience for all our students.

Since 1919, when we were founded as the College of Estate Management, we have supported around 150,000 students worldwide.

With over 100 years' experience of providing specialist and innovative training globally, we are here to support you through your studies and ensure you join the path to a rewarding career.

We are steadfast in our aspiration to be The Centre of Excellence for Built Environment Education.



Ashley Wheaton
UCEM Principal

5 reasons to choose UCEM

1 Built for flexibility

Online learning allows you to choose when and where you study and provide the flexibility to fit around your work and other commitments, you can even slow down the pace or take a break if your circumstances change.

3 Affordability

An online degree with UCEM costs considerably less than a traditional university and our flexible delivery allows you to combine study with work.

4 Community

Study from anywhere in the world and be part of our vibrant international community.

2 Recognition

Our programmes are recognised and accredited by professional bodies including:



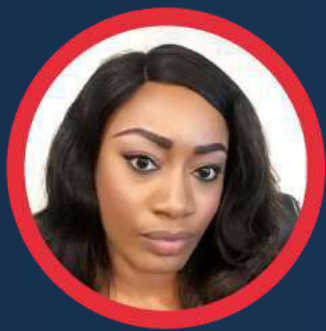
5 Enhance your employability

Thousands of real estate and construction professionals have accelerated their careers by gaining qualifications through UCEM.



Say hello, sannu, *السلام عليك* to your new community

Joining UCEM means being part of a vibrant international community of students from across the globe.



Ajumoke Orike
MBA Real Estate and Construction

Nigeria

Join our ever-growing

Antigua and Barbuda, Australia, Azerbaijan, Bahamas, Bahrain, Bangladesh, Barbados, Belgium, Bermuda, Botswana, British Virgin Islands, Cambodia, Canada, Cayman Islands, China, Cyprus, Czech Republic, Egypt, England, Eswatini,

Ethiopia, France, The Gambia, Germany, Ghana, Gibraltar, Greece, Grenada, Guernsey, Guyana, Hong Kong, India, Indonesia, Ireland, Isle of Man, Israel, Jamaica, Jersey, Kenya, Republic of Korea, Kuwait, Lebanon, Lithuania, Luxembourg, Macao,

哈囉



Lebanon

Hong Kong

ria

Chan Sui Kai
MSc Real Estate

Manal Abdo
Real Estate

[ving community >](#)

Malawi, Malaysia, Maldives, Mauritius, Mongolia,
Monserat, Morocco, Mozambique, Namibia,
Netherlands, New Zealand, Nigeria, Northern
Ireland, Norway, Oman, Pakistan, Philippines,
Poland, Qatar, Réunion,

Seychelles, Sierra Leone, Singapore, South Africa,
Spain, Sri Lanka, St Lucia, St Kitts and Nevis, St
Vincent and the Grenadines, Sudan, Tanzania,
Trinidad and Tobago, Uganda, Ukraine, United Arab
Emirates, United States, Vietnam, Wales, Zambia,
Zimbabwe

MSc Building Surveying

AWARD

MSc Building Surveying

OVERVIEW

Step into the world of building surveying with this online postgraduate conversion programme. UCEM's industry-recognised programme provides a rigorous understanding of the core technical disciplines of the building surveying specialism and their role within the wider context of built environment professional disciplines.

This programme benefits from a range of contemporary, well-supported teaching and learning techniques, including practical project work to improve your career prospects in the public and commercial sectors throughout the UK and overseas.

DURATION

2 years

FEES

£1,225 per module for students commencing in the 2023/24 academic year x 8 modules.

Total programme fee: £9,800

DATES

(2023-24)	Apply by	Start date
Autumn	7 Aug 2023	25 Sept 2023
Spring	5 Feb 2024	25 Mar 2024

TIME COMMITMENT

Each 20-credit module equates to a total of 200 study hours broken down between directed online learning, self-directed learning and assessment. The breakdown:

Directed study time:	(30%)
Self-directed study time:	(35%)
Assessment study time:	(35%)

This programme is accredited by the Royal Institution of Chartered Surveyors, the Chartered Institute of Building, Chartered Association of Building Engineers and Hong Kong Institute of Construction Managers

smtr: semester

Yr/ Smtr		Autumn entry	Spring entry
1	1	Sustainable and Innovative Construction Costing and Contracts	Sustainable and Innovative Construction Planning and Development
	2	Law for Surveyors Planning and Development	Law for Surveyors Costing and Contracts
2	1	Building Pathology and Maintenance	Analysis and Adaptation of Buildings
		Elective (choose 1)	Elective (choose 1)
		Management of Construction or Property Management or Building Control and Inspection	Management of Construction or Property Management or Building Control and Inspection
	2	Postgraduate Project	Postgraduate Project
		Building Pathology and Maintenance	Analysis and Adaptation of Buildings
		Postgraduate Project (continued)	Postgraduate Project (continued)

Apply now >

Meet your programme leader

James is an architecturally trained building conservator specialising in sustainability and recording of the historic built environment. Currently he is the programme leader for the MSc. Building Surveying programme at University College of Estate Management. Previously a senior lecturer in sustainability of the existing built environment at Kingston University, teaching on the Building Surveying and historic building conservation courses.



reasons to work in the
built environment

Currently James is the vice-president of ICOMOS International Scientific Committee on Energy and sustainability (ICOMOS ISCES). He is also on the ICOMOS UK National Scientific Committee on Digital Heritage and ICOMOS UN Sustainable Development Goals Working Group. James was made a fellow of the Royal Geographical Society in 2010 for work on the sustainability of the built environment.



[Book appointment
with the programme
leader >](#)



[Join a programme
leader webinar >](#)

Dr James Ritson

BA (Hons), PGDip, Arch MA, PhD, FRGS



Currently James is the vice-president of ICOMOS International Scientific Committee on Energy and sustainability (ICOMOS ISCES). He is also on the ICOMOS UK National Scientific Committee on Digital Heritage and ICOMOS UN Sustainable Development Goals Working Group. James was made a fellow of the Royal Geographical Society in 2010 for work on the sustainability of the built environment.



[Why study on our MSc Building Surveying Programme](#)



Graduate Celebration Week >



A blurred background image showing a group of graduates in academic regalia (caps and gowns) at a ceremony. The focus is on the foreground, which is out of focus, showing the back of a graduate's head and shoulders.

“

I chose to study at UCEM because of its esteemed reputation in the industry. UCEM's degrees are recognised by HKIS and RICS which means I am qualified to become chartered.

All the module leaders and tutors were very willing to help and I never felt alone during my studies.

The VLE platform is very user-friendly so it makes studying more efficient which is very important for those who have little time to study each day after work.

Billy Diec

Assistant Quantity Surveyor,
Arcadis Hong Kong Limited

Study online

[Apply now >](#)

Studying online doesn't mean studying alone. You'll study alongside our vibrant and growing student community and have access to our experienced tutors and a network of discussion forums to enrich your studies.

State-of-the-art learning

- Induction resources to prepare you for your online learning experience
- Online assignment submission, feedback and results
- A network of discussion forums shared by fellow students and tutors
- Comprehensive study resources to guide your academic journey

Flexible learning

- Earn while you learn. Our programmes will fit around your work and personal commitments
- Conveniently catch up on scheduled learning materials you may have missed
- Access to your learning materials to study wherever you are with an internet connection

Virtual Learning Environment (VLE)

- Rich resources and tools to support your education and build your knowledge and skills
- Learn through online seminars, briefings, tutorials and drop-in sessions
- You'll also have access to our fantastic e-Library, which hosts a vast collection of e-books, journals, articles and other online resources, enabling you to access a wealth of subject-specific and credible information to support you throughout your studies



[Need more information? Let's chat. >](#)



enquiries@ucem.ac.uk

Support



Academic support tutors

This team will help you navigate the world of online learning. Whether you need help using the VLE, the e-Library, understanding how to submit assignments, or managing your workload, these tutors are here to help you in a variety of ways throughout your studies.



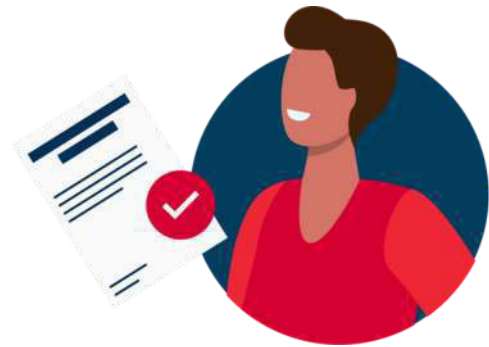
Module tutors

Your module leader is assisted by a team of module tutors who provide additional support via the weekly discussion forums and through webinars.



Academic support

Our academic staff are experts in their fields and are here to make your studies with UCEM both stimulating and inspiring, whilst offering vital support and guidance along the way.



Disability and welfare

UCEM has a dedicated disability and welfare team who work to provide all students with the support and tools they need to succeed. Support is available to students with a range of disabilities, health conditions and learning difficulties.



Student Engagement team

Your first point of contact as a student. They will support you your studies and with queries, ensuring you're put in touch with all of the right teams and services within UCEM.



disabilitysupport@ucem.ac.uk



0800 019 9697

Programme information

Entry requirements

Students are required to be 18 years or over at the start of their programme.

Academic requirement

- A Bachelor's Degree with honours at lower second standard (2.2) or equivalent

English language requirement

You should have:

- GCSE Grade 4 (or C) or above in English Language or English Literature or an equivalent qualification
- Grade 6.0 or above, with at least 6.0 in the reading and writing modules, in the International English Language Testing System (IELTS) academic test administered by the British Council
- 88 or above in the internet option, 230 or above in the computer-based option or 570 or above in the paper-based option of the Teaching of English as a Foreign Language (TOEFL) test
- Grade 4 (or C) or above in English (Language or Literature) at A/S Level
HKDSE (Hong Kong Diploma of Secondary Education) Grade 3, or HKALE (Hong Kong Advanced Level Examination – Advanced Level & Advanced Supplementary Level) Grade E, or HKCEE (Hong Kong Certificate of Education Examination) Grade 3-5* or Grade A-D (Syllabus B only).

Assessment

Your module performance will be evaluated through a variety of assessments. Combinations of module assessment vary across programmes and from module to module. In line with the supported online education offering at UCEM, online resources will be made available in preparation of, and in conjunction with, assessments. Assessment no longer features exams, which means no travel to exam centres.

Access and participation plan

UCEM is committed to widening access and participation by providing education that is accessible to all, to enable students to achieve and develop in their careers. For more information, please visit

[our policies page.](#)

Visit website for more information >

Fees and funding

Flexible payment options

Like with our method of learning we also offer flexibility when it comes to paying for your programme. You can choose to make a one-off payment at the beginning of each semester or we also offer an instalment plan to allow students to pay for each semester in five monthly instalments to spread the cost.

If you do not pass a module at the first attempt, you will normally be offered a resubmission free of charge. If you fail the resubmission, you will normally be required to pay the full module fee when you retake the module. If you suspend or defer a module you will be able to return to study that module at the next available opportunity free of charge (except for any project module where you will be charged 50% of the module fee). If you do not return to study the module at the next available opportunity, the full module fee will be charged when you do return.

Please visit our [financial support page](#) for more information.

Scholarships

Our Postgraduate Scholarship Scheme is designed to assist those new students who are able to merit financial support and demonstrate a strong academic record in their previous studies. It is open to new postgraduate students from all countries and will provide a discount of up to 50% off fees for the duration of the programme. To apply for a postgraduate scholarship from UCEM, you must first be offered a place on a degree.

[Apply for a scholarship >](#)

Student finance

Students domiciled in England, Wales and Northern Ireland may apply to Student Finance for a Postgraduate Loan to help towards programme and living costs. Unlike undergraduate loans where the Student Loans Company (SLC) pays the university the tuition fees directly, for postgraduate programmes the money is paid directly to you. For postgraduate programmes, this only occurs after you have completed registration and made your initial fee payment to UCEM.

Ready to apply?

You can view our step-by-step guide or start your application below

[Apply now >](#)



Global Community

Graduation is just the beginning of your journey with UCEM. Upon graduating, you'll be an UCEM alumnus/alumna, which means gaining access to fantastic benefits.

15% discount on all online CPD with UCEM Online Academy

Careers advice for three years following your graduation

15% discount on courses designed to provide a route to chartered membership of CIOB

Invitations to all Alumni Association CPD and networking events

Access to our mentoring programme

[Join the alumni association >](#)

[Join UCEM Global Community >](#)

We are happy to announce that we launched our UCEM Global Community, an interactive platform connecting past students for future benefit. This platform offers our alumni the opportunity to connect and network with one another, as well as make full use of all alumni benefits in one space.



With over **150,000** UCEM alumni and counting, you'll join a vast and growing community.



community.

Sustainability

Teaching sustainability

Realising UCEM's sustainability potential goes beyond addressing day-to-day operations, to recognising our position to influence and educate industry professionals who design, develop and manage the built environment. Delivering academic excellence is one of UCEM's primary goals.

Recognition

UCEM is proud to have been the first alternative provider to be awarded the Responsible Futures accreditation by the NUS (National Union of Students). This highlights UCEM's commitment to promoting sustainability and social responsibility. UCEM was also recognised with a 'Highly Commended' accolade at the Green Gown Awards.

Built for change

The built environment sector accounts for around 38% of all energy-related carbon emissions worldwide. This course explores how net zero carbon can be achieved through optimised building design, sustainable material selections, and efficient construction.

[View our sustainability strategy >](#)

The UN's sustainability goals

1 NO
POVERTY



2 ZERO
HUNGER



3 GOOD HEALTH
AND WELL-BEING



4 QUALITY
EDUCATION



5 GENDER
EQUALITY



6 CLEAN WATER
AND SANITATION



7 AFFORDABLE AND
CLEAN ENERGY



8 DECENT WORK AND
ECONOMIC GROWTH



9 INDUSTRY, INNOVATION
AND INFRASTRUCTURE



10 REDUCED
INEQUALITIES



11 SUSTAINABLE CITIES
AND COMMUNITIES



12 RESPONSIBLE
CONSUMPTION
AND PRODUCTION



13 CLIMATE
ACTION



14 LIFE
BELOW WATER



15 LIFE
ON LAND



16 PEACE, JUSTICE
AND STRONG
INSTITUTIONS



17 PARTNERSHIPS
FOR THE GOALS



**SUSTAINABLE
DEVELOPMENT GOALS**

Equality, diversity and inclusion

Built for opportunity

At UCEM a commitment to equality is embedded in all that we do. We celebrate diversity and the strengths that it brings to our staff body, our student community and our Board of Trustees, recognising that people are key to our success.

UCEM provides accessible, relevant and cost-effective education which enhances careers, increases professionalism and leads to a more sustainable built environment. Our mission has always been to provide flexible and affordable education to a worldwide, diverse student community. We aim to become the Centre of Excellence for Built Environment Education. Anyone wanting to study in a built environment discipline should be able to access the education we provide.

UCEM is a member of the 30% Club which collectively seeks to promote gender equality on Boards and Senior Management Teams in organisations across the world as a first step towards true diversity and equality. UCEM's Board of Trustees is 50% female and its Senior Leadership Team is 55% female.

At UCEM, we are committed:

- ✓ to providing equality of opportunity and freedom from unlawful discrimination
- ✓ to delivering courses that are accessible to all students, regardless of age, location or any protected characteristics
- ✓ to achieving equality for all those who learn and work here
- ✓ to challenging under-representation, discrimination and differences in outcomes.
- ✓ to embedding a working and learning environment which makes all students, staff and trustees feel part of a community, one which celebrates diversity and provides equal opportunities for all to challenging under-representation, discrimination and differences in outcomes.



on

Why equality, diversity and inclusion matters >



“

We have to have representation in terms of the professionals that are out there serving our communities that are truly diverse and we have to have representation so that all points of view are taken into account.



Amanda Clack

Dr (hc) MSc BSc PPRICS FRICS FICE FAPM FRSA FIC CCMi CMC

Chair of UCEM's Board

Our BSc (Hons) programmes

- > Undergraduate Single Module Study
- > CertHE Built Environment Studies
- > BSc (Hons) Building Control
- > BSc (Hons) Building Surveying
- > BSc (Hons) Construction Management
- > BSc (Hons) Quantity Surveying
- > BSc (Hons) Real Estate Management

Access to our BSc (Hons)

- > BSc Access Module

Access to our MSc

- > Postgraduate Access Programme

Our MSc programmes

- > Postgraduate Single Module Study
- > MSc Building Surveying
- > MSc Construction Management
- > MSc Quantity Surveying
- > MSc Real Estate
- > MSc Innovation in Sustainable Built Environments

Our specialist programme

- > MBA Construction and Real Estate

University College of Estate Management
Horizons, 60 Queen's Road, Reading, RG1 4BS

Freephone UK: 0800 019 9697
International: +44 (0)118 921 4696
enquiries@ucem.ac.uk